

Accusys VolPack ACS2012 Storage

Extending Accusys ExaSAN: from PCIe to iSCSI & FC

VolPack Storage Solution Highlights

- **Dual-Active Controller Block Storage:** Ensures high availability and performance with dual-active controllers, providing continuous operation and minimizing downtime.
- **Versatile Connectivity Options:**
 - Supports **8 x 10Gb** iSCSI connections
 - Supports **8 x 25Gb** iSCSI connections
 - Supports **8 x 32Gb** Fibre Channel (FC) connections
- **Exceptional Throughput Performance:**
 - Up to **14GB/s** read throughput
 - Up to **11GB/s** write throughput
- **Massive Scalability:**
 - **Single silo scales up to 6PB** (petabytes) of storage capacity, allowing for significant data growth without compromising performance.

Accusys ACS2012 - Accusys' ExaSAN series has long been a leader in high-performance workgroup storage solutions for the M&E industry. Now, the VolPack series takes this advantage even further, combining the high-speed performance of the PCIe architecture with added support for iSCSI and Fibre Channel (FC) connectivity to meet diverse storage needs.

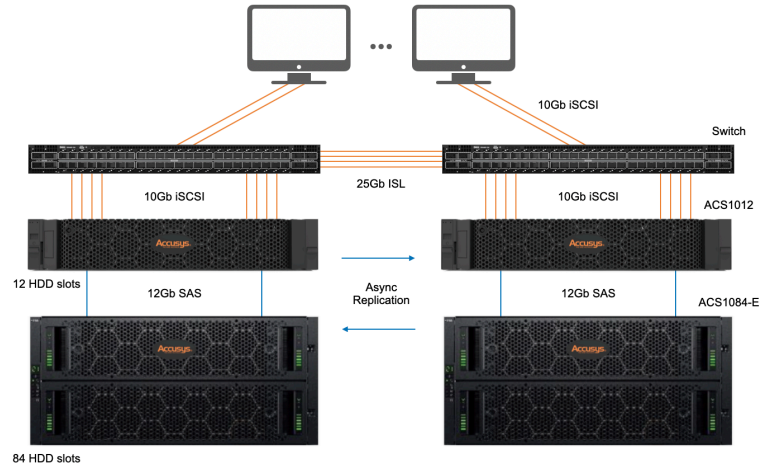
The VolPack series is designed specifically for cost-sensitive markets, blending high performance, large capacity, and ease of use to address a wide range of storage challenges. Whether enhancing shared performance, supporting massive storage needs, or enabling flexible multi-scenario applications, VolPack helps users tackle future challenges with ease.

If you're looking for powerful performance, highly scalable capacity, and an ultra-simplified compact design—especially within a limited budget—then the VolPack ACS2012, starting from a 2U form factor with a capacity of 288 TB, is your ideal choice. It features dual-active controllers, multi-core processors, and 99.999% availability, equipped with dual-actuator HDDs to deliver SSD-level performance using HDDs, making it the perfect solution for high-value video workloads.

VolPack SAN Storage Family

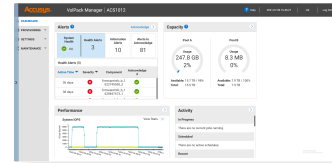


Adding external storage to servers brings numerous tangible benefits to organizations. By separating servers from storage using a SAN (Storage Area Network), you can avoid server upgrades or replacements due to capacity constraints. With VolPack controller-based arrays, you can perform server upgrades and maintenance without data disruption, as the data remains in place. The VolPack storage solution provides workgroups with a dynamic, high-performance, and scalable infrastructure for Media & Entertainment (M&E) applications of any size—simple and economical. Additionally, if you have large data storage needs, you can achieve this by connecting our expansion unit, the ACS2084-E. The ACS2084-E is a 5U expansion enclosure, and each ACS2012 can be linked with up to three 5U expansion units. With this configuration, the storage capacity can be expanded to 6PB, easily meeting your high-capacity requirements.



Management Ecosystem

VolPack is supported by an intuitive and user-friendly web-based VolPack Manager GUI, which provides configuration, management, alerting, and basic remediation capabilities for administrators. As the complexity of your infrastructure grows with more units to track and manage, the Accusys OpenManage suite offers a set of intuitive tools that work together to deliver automated and centralized management of all your VolPack units.



VolPack Manager and OpenManage are included with the array you purchase as part of the no-cost, all-inclusive software package.

Simple. Fast. Affordable.

The VolPack ACS2012 is built on a streamlined design and exceptional performance, starting from a 2U form factor with an initial capacity of up to 288 TB, and it can flexibly scale up to 6PB to meet the high-capacity and high-performance demands of the media and entertainment industry. This storage solution is specifically designed for businesses looking to boost productivity within a limited budget, leveraging innovative multi-port design and robust performance to tackle future challenges.



SIMPLE

Effortless installation and configuration, easy management, and integration into your M&E workflows.



FAST

Powerful IOPs; high bandwidth; fast host connectivity; 12Gb SAS backend



AFFORDABLE

Low-cost configs & TCO; easy to own all-inclusive SW; pay-as-you-grow